

# Sweet Hearts & Gingham Afghan

*Herrschners®*

## LEVEL

Easy



## FINISHED SIZE

Approx 36" x 49"

## MATERIALS

Sport weight yarn (3.5oz, 224 yds per skein)

-White (6 skeins)

-Pink (3 skeins)



Worsted weight yarn (3.5oz, 200 yds per skein)

-Light Pink (4 skeins)



Crochet hooks, size D-3 (3.25mm) and size E-4 (3.5mm) or sizes to obtain gauge

Tapestry needle

## GAUGE

With size D hook: 18 dc and 9 dc rows = 4" (10.0cm)

With size E hook: 18 sc and 20 sc rows = 4" (10.0cm)

## PATTERN NOTES

☐ Carry along yarn in Gingham Panels and all hearts. Use separate balls of yarn for each heart.

☐ Follow Heart Panel chart odd-numbered rows right to left and even-numbered rows left to right.

☐ The first row of each Border Heart chart is given in written instructions for heart placement. Refer to graphs beg with Rnds 6 and 7. All Border Hearts are worked from right to left.

☐ BLO: back loops only, FLO: front loops only.

## STITCH GUIDE

Chain, single crochet, double crochet, slip stitch

## DIRECTIONS

### Gingham Panel (Make 3)

With White and size D hook, ch 34.

☐ **Row 1 (RS):** Dc in fourth ch from hook, \* (change to Light Pink in last 2 lps of last dc made, dc in next 4 ch, change to White in last 2 lps of last dc made, dc in next 4 ch); rep from \* across, ending with 2 White dc in last 2 ch, turn. (32 dc)



©2008 Herrschners, Inc.

## Abbreviations

approx.....	approximately	mm .....	millimeter(s)
beg.....	beginning	oz .....	ounce(s)
bet.....	between	pat .....	pattern
bl(s) .....	block(s)	pc .....	popcorn
CC .....	contrasting color	rem .....	remaining
ch.....	chain(s)	rep .....	repeat
ch-.....	refers to chain	rnd(s) .....	round(s)
	or space previously	RS .....	right side
	made: e.g., ch-1 sp	sc .....	single crochet(s)
ch-sp .....	chain space	sk .....	skip
cm .....	centimeter(s)	sl st.....	slip stitch
dc .....	double crochet(s)	sp(s) .....	space(s)
dec .....	decrease	st(s) .....	stitch(es)
Fig .....	figure (diagram)	tog .....	together
hdc ....	half double crochet(s)	tr .....	treble crochet(s)
inc .....	increase	WS .....	wrong side
lp(s) .....	loop(s)	yd(s).....	yard(s)
MC .....	main color	yo.....	yarn over

[ ].....	work instructions within brackets
	as many times as directed
( ) .....	work instructions within parentheses
	as many times as directed
* .....	repeat the instructions following
	the single asterisk as directed
* * .....	repeat instructions between single
	and double asterisks as many
	times as directed or repeat from
	a given set of instructions
" .....	inch(es)

□ **Row 2:** With White, ch 3, dc in next dc, \* (change to Light Pink, dc in next 4 dc, change to White, dc in next 4 dc); rep from \* across, ending with 2 White dc, change to Light Pink in last dc, cut White, turn.

□ **Row 3:** With Light Pink, ch 3, dc in next dc, \* (join Bright Pink in last 2 lps of last dc made, dc in next 4 dc, change to Light Pink, dc in next 4 dc); rep from \* across, ending with 2 Light Pink dc, turn.

□ **Row 4:** Rep Row 3, changing to White in last dc, cut Bright Pink, turn.

□ **Rows 5-94:** Rep Rows 1-4 in sequence, ending with Row 2, fasten off.

### Gingham Panel Edging

□ With RS facing and working along ends of rows, join White with sc around ch-3 of Row 1, sc in same row, 2 sc around dc of Row 2, \* (change to Light Pink in last sc made, 2 sc around ch-3 of Row 3, 2 sc around dc of Row 4, change to White in last sc made, 2 sc in each of next 2 rows); rep from \* to corner, fasten off. Rep along opposite side.

### Heart Panel (Make 2)

With White and size E hook, ch 14.

□ **Row 1 (RS):** Sc in second ch from hook, sc in each ch across, turn. (13 sc)

□ **Row 2:** Ch 1, sc in each st across, turn. (13 sc)

□ **Rows 3-196:** Work Rows 3-22 of Heart Panel chart; rep Rows 1-22 of chart eight more times, ending with Row 20 on the eighth time, fasten off.

### Heart Panel Edging

□ With RS facing and working along ends of rows, join White with sl st in end of Row 1, ch 1, sc in end of each row to next corner, fasten off. Rep along opposite side.

### Assembly

□ With White, sew panels tog according to Panel Layout diagram on following page.

### Trim

□ **Rnd 1:** With RS facing and size D hook, join Bright Pink in lower right corner, sc in each st around, join with sl st in first sc, do not turn.

□ **Rnd 2:** *Note: Work this rnd in FLO.* Ch 2, sc in first sc, ch 2, \* sc in next 2 sc, ch 2; rep from \* around. Join with sl st in first sc, fasten off.

### Afghan Border

□ **Rnd 1:** With RS facing and size E hook, join White in back lp of Rnd 2 of Trim in lower right-hand corner, ch 1, \* sc in BLO of each st across to next corner, 2 sc in corner; rep from \* around, join with sl st in beg sc, do not turn.

□ **Rnds 2-5:** Working in both lps, rep Rnd 1.

□ **Rnd 6:** Ch 1, sc in first 5 sts. Begin Right Border chart, \* change to Bright Pink in last sc, sc in next 3 sts, change to White, sc in next 12 sts; rep from \* across to corner. Work 3 sc in corner st, sc in each st across to next corner, 3 sc in corner st, sc in next 5 sts. Begin Left Border chart, sc in next 11 sts, \*\* change to Bright Pink, sc in next 3 sts, change to White, sc in next 12 sts; rep from \*\* across to next corner. Work 3 sc in corner st, sc across to last corner, 3 sc in corner st, sc to joining point and join with sl st in beg sc.

□ **Rnd 7:** Sc in each st across referring to Row 7 of Right Border chart, 3 sc in corner st, sc in next 15 sts. Begin Top Border chart, \* change to Bright Pink, sc in next st, change to White, sc in next 14 sts; rep from \* across to corner. Work 3 sc in corner st, sc in each sc across referring to Row 7 of Left Border chart for each color change, 3 sc in corner st, sc in next 13 sts. Begin Bottom Border chart, \*\* change to Bright Pink, sc in next 2 sts, change to White, sc in 1 st, change to Bright Pink, sc in next 2 sts, change to White, sc in next 10 sts; rep from \*\* across to corner. Work 3 sc in corner st, sc to joining point, join with sl st in beg sc.

□ **Rnd 8:** Ch 1, continue with Row 8 of each Border chart, having 3 sc in each corner and joining as before.

□ **Rnds 9-10:** Rep Rnd 8 working according to each corresponding chart.

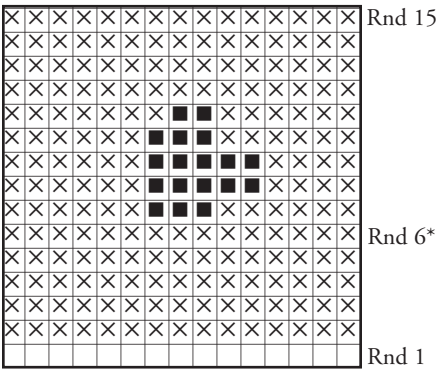
□ **Rnds 11-15:** Rep Rnds 1-5, fasten off.

### Border Trim

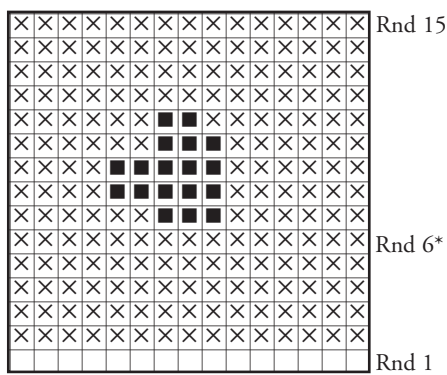
□ **Rnd 1:** Working in FLO, with size D hook join Bright Pink in any st. Rep Rnd 2 of Trim, do not fasten off.

□ **Rnd 2:** Working in BLO of Rnd 1, rep Rnd 1, fasten off and weave in all ends.

### Left Border Hearts



### Right Border Hearts

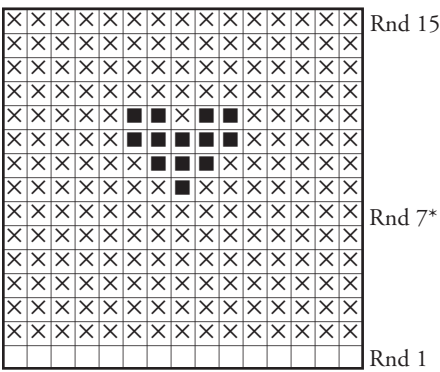


### SINGLE CROCHET

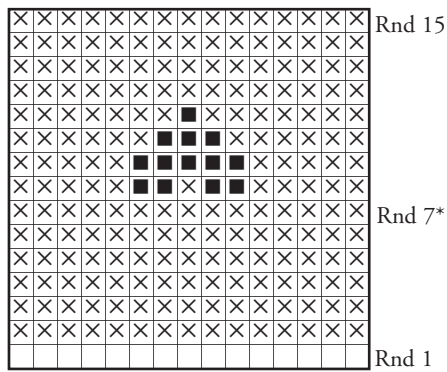
Symbol	Color
■	Bright Pink
×	White

*Note: \* indicates rnd given in instructions for heart placement in border. See pattern notes for further instructions.*

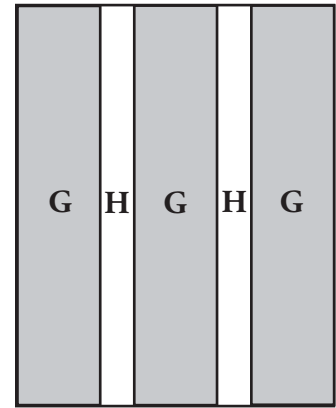
### Top Border Hearts



### Bottom Border Hearts

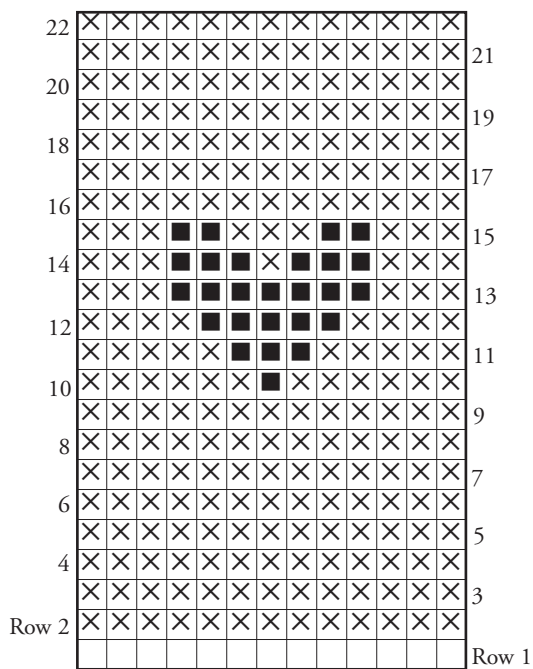


### Panel Layout



G Gingham Panel  
H Heart Panel

### Heart Panel



### Suggested Materials

[Herrschners® Sport Weight Yarn](#)  
Herrschners Item #: 010175

[Herrschners® Worsted Weight Yarn](#)  
Herrschners Item #: 010176

[Herrschners® Crochet Hook Set with Case](#)  
Herrschners Item #: 010049

To order, visit [Herrschners.com](http://Herrschners.com)